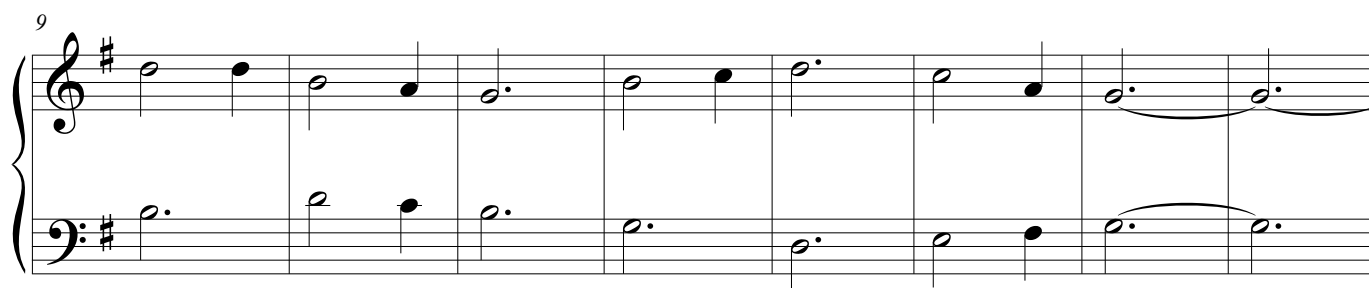


Minuit, chrétiens

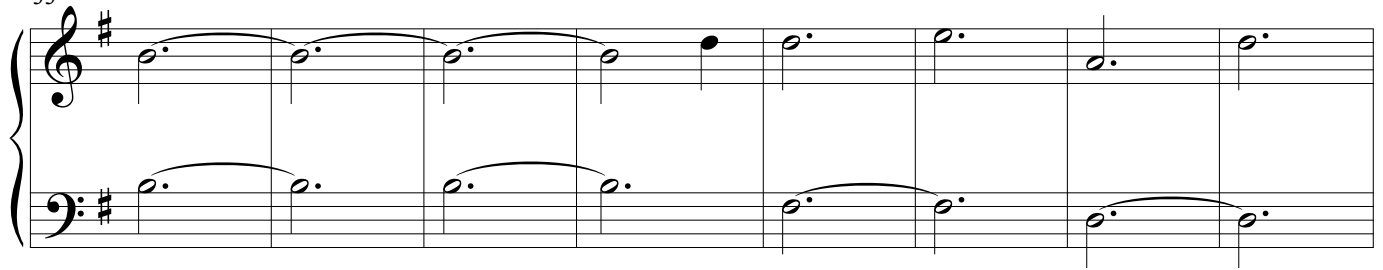
Adolphe Adam

A. Nantel (arr.)

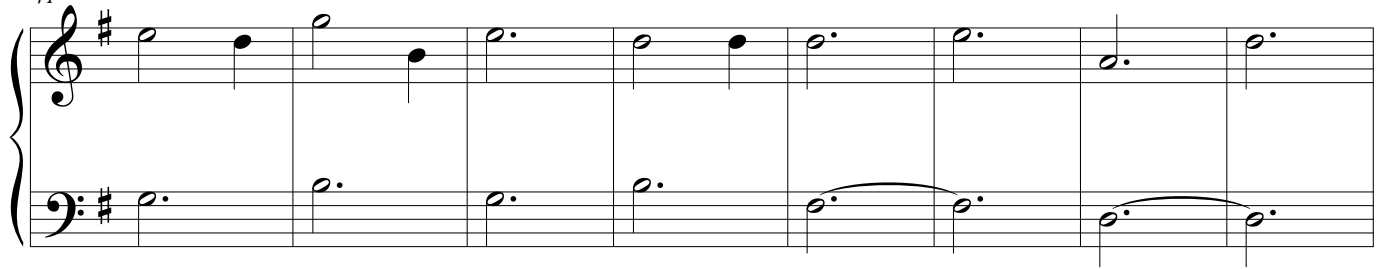
Andante maestoso (♩. = 72)



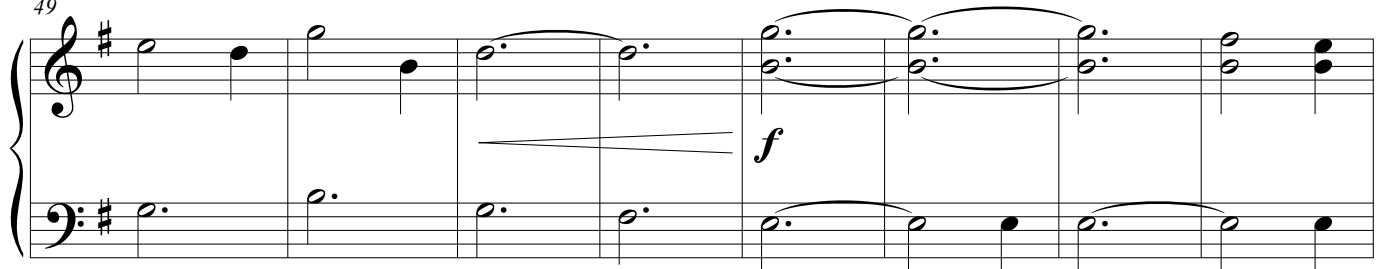
33



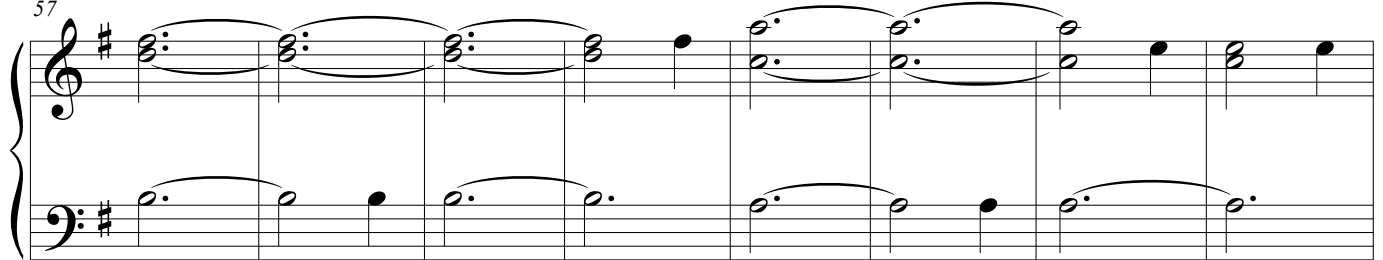
41



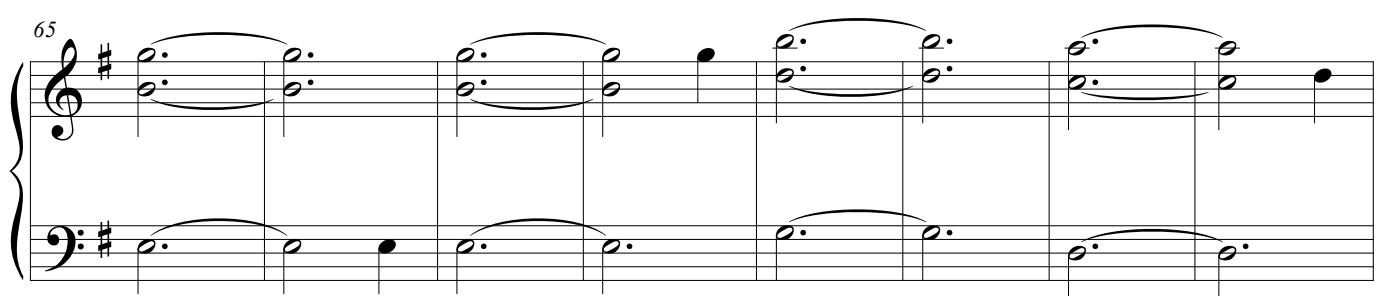
49



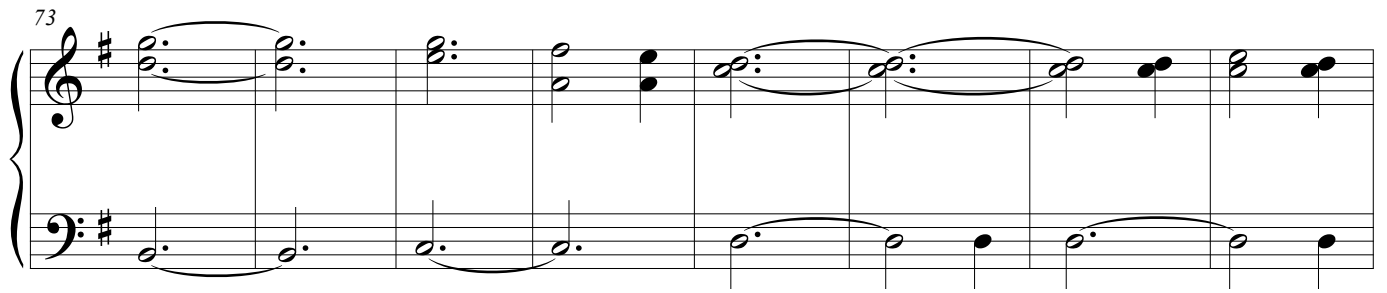
57



65

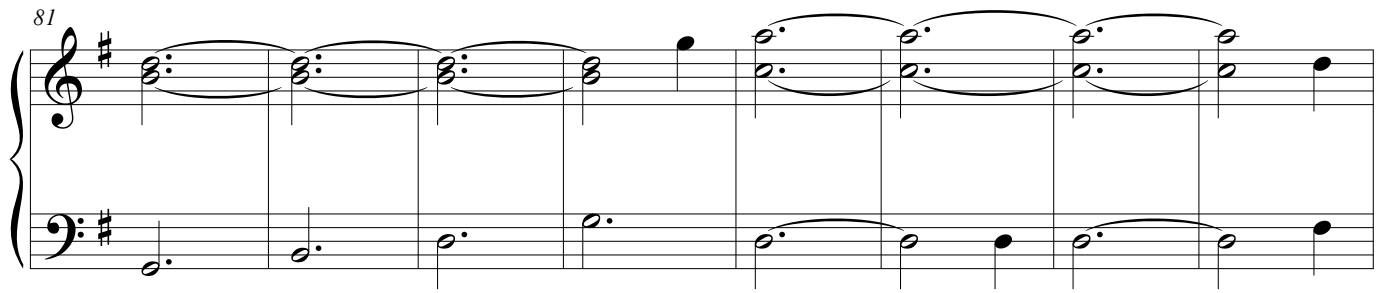


73



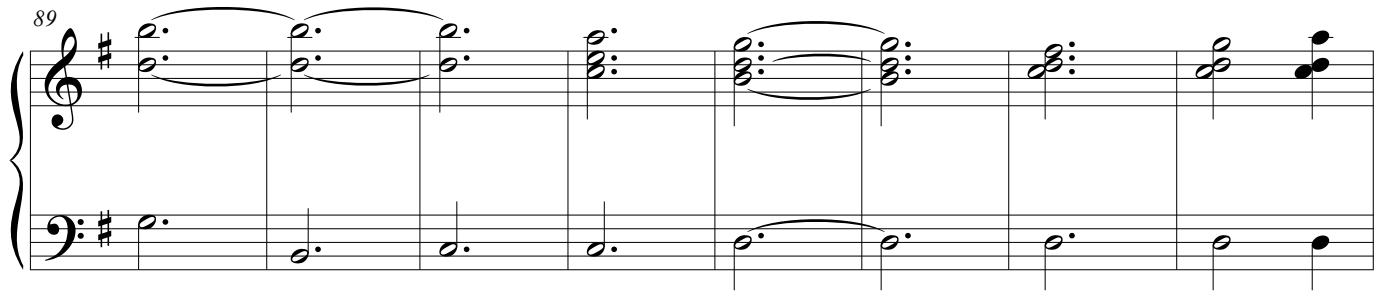
Measures 73-80. The music is in G major (one sharp). The right hand features a series of chords, mostly triads and dyads, with some melodic movement. The left hand provides a steady bass line with eighth and quarter notes.

81



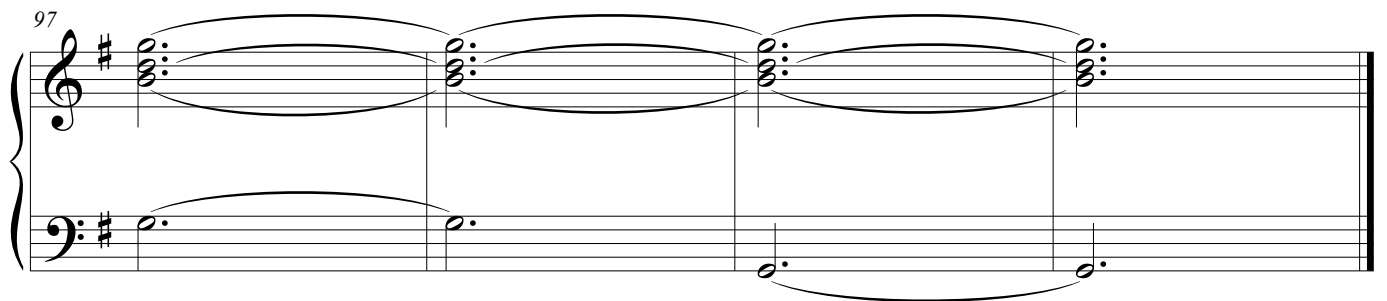
Measures 81-88. The right hand continues with chords, including some with grace notes. The left hand maintains the bass line, with some longer note values.

89



Measures 89-96. The right hand has more complex chordal textures, including some with grace notes. The left hand continues the bass line.

97



Measures 97-104. The right hand features long, sustained chords, some with grace notes. The left hand has a few notes, including a long note in the final measure.